

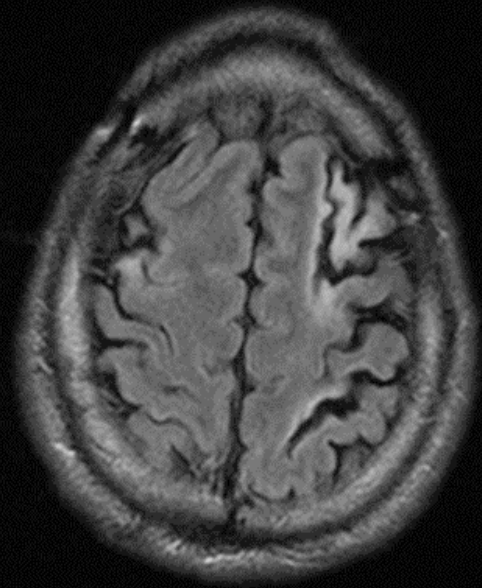
レジデントレクチャー

# 20代 男性

主訴： 多発梗塞精査

既往： 秘密

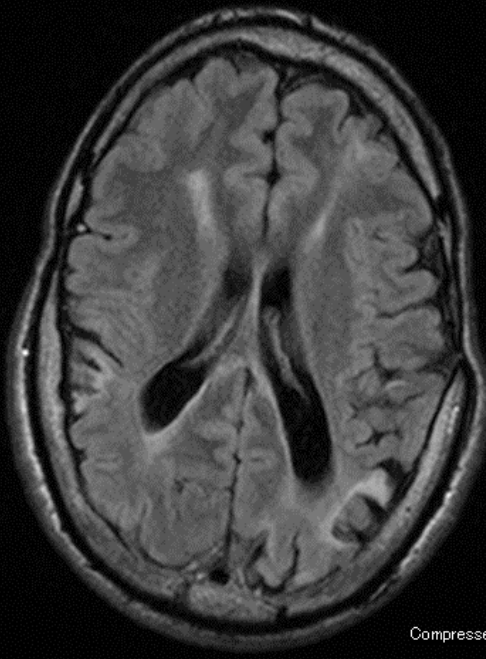
1.2317131



Compressed: 7:1

cm

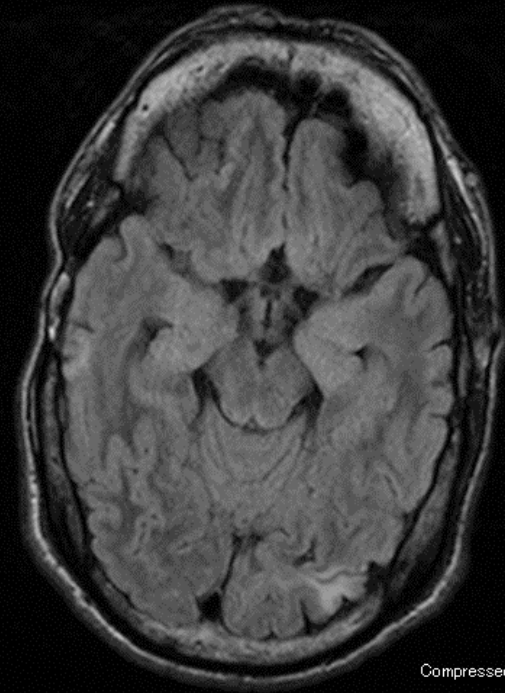
1.2317131



Compressed: 7:1

cm

1.2317131

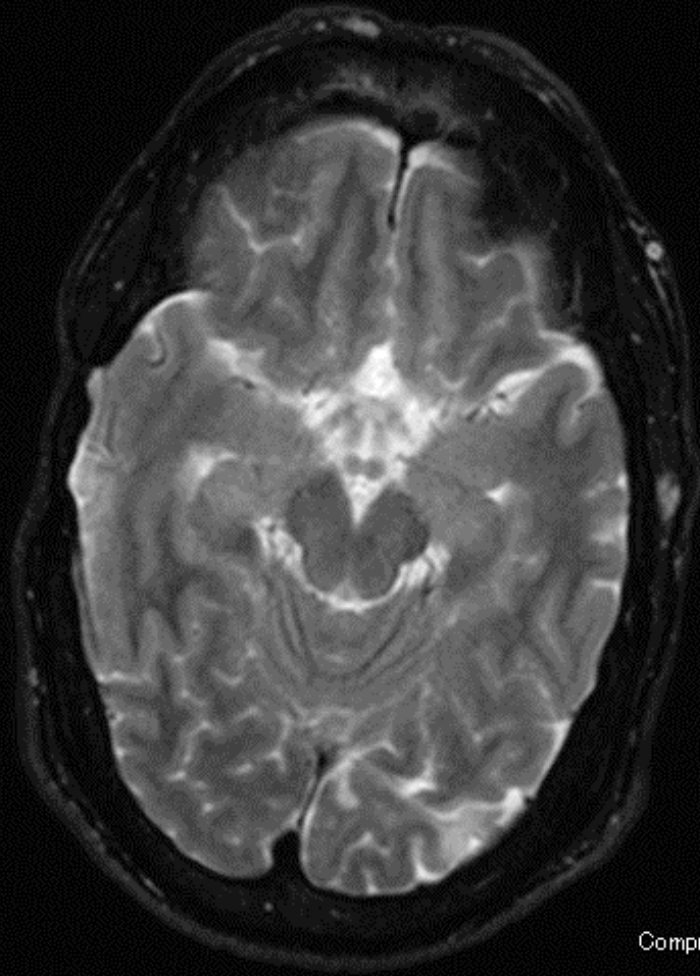


Compressed: 7:1

cm

FLAIR

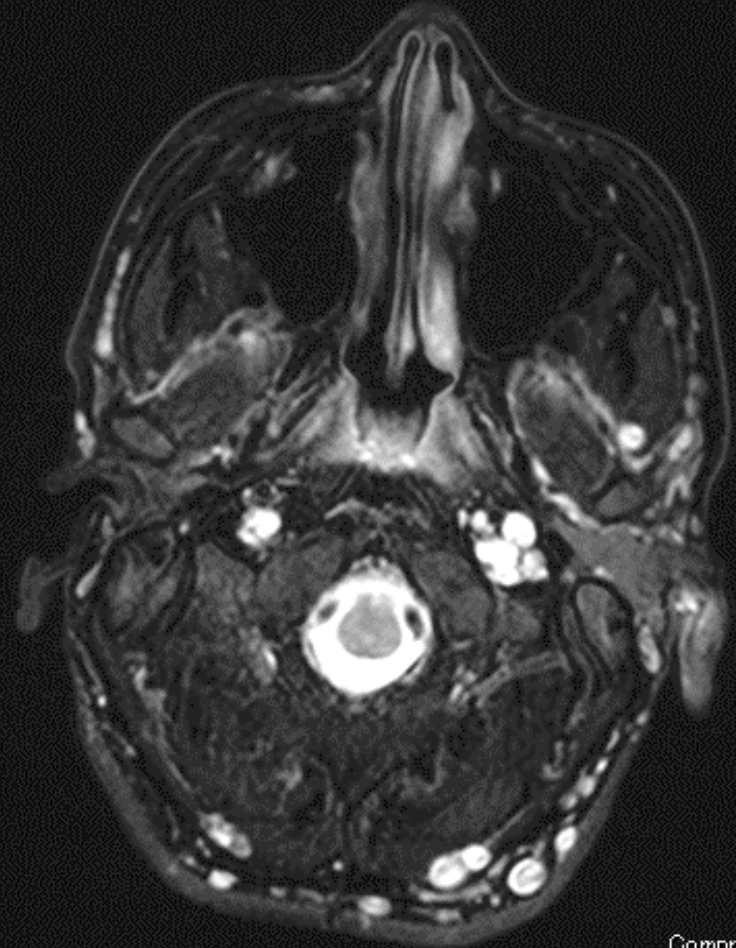
1.2.2.1.1



Compressed: 7:1

cm

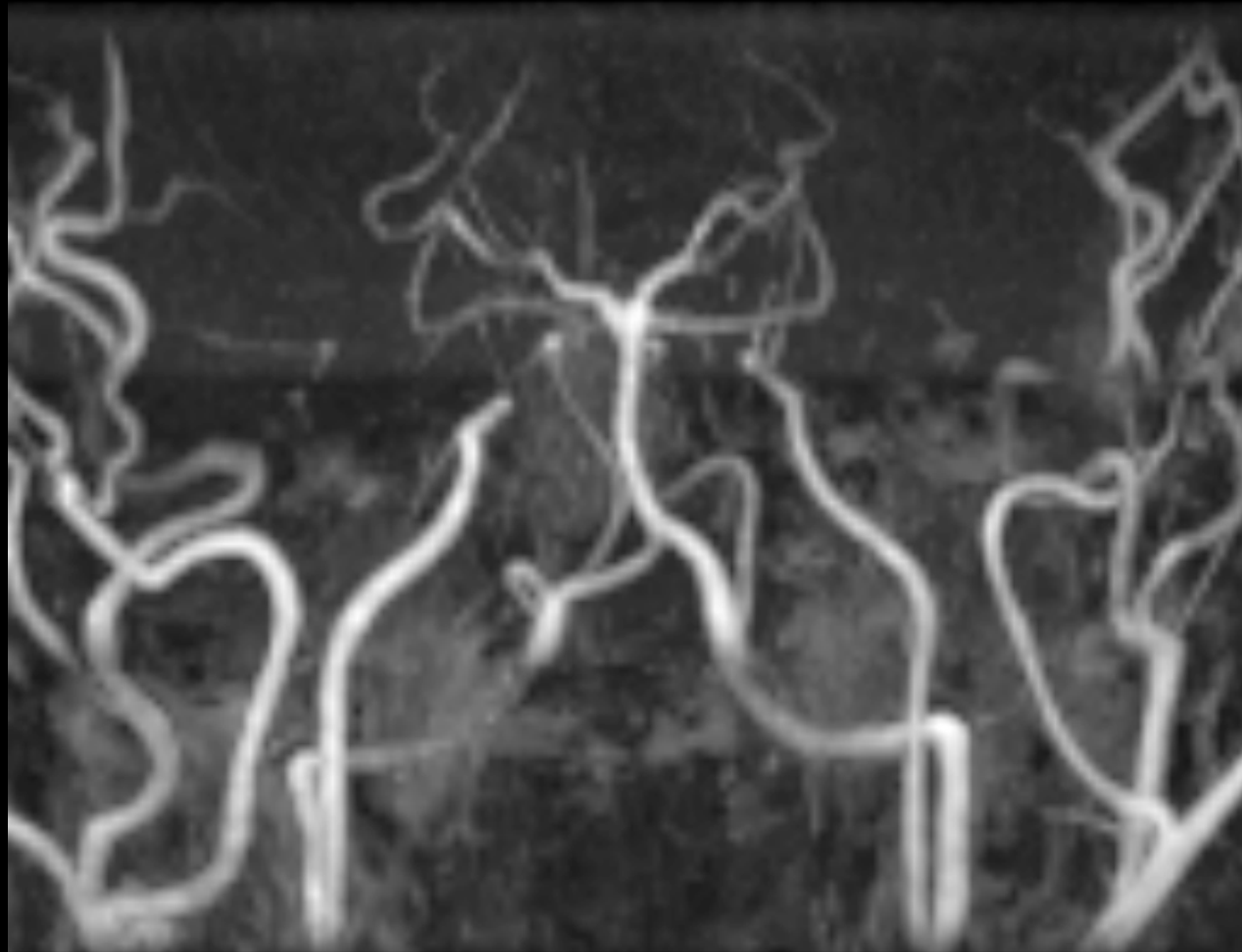
1.2.2.1.1



Compressed: 7:1

cm

T2WI



Compressed: 8:1

cm

MRA

# 診断

NF-1に伴う類もやもや病

# 類もやもや病

- もやもや病（Willis動脈輪閉塞症）で基礎疾患に伴うもの。

# 類もやもや病を呈する疾患(代表)

Risk factor

Hirschsprung's disease

Fanconi anemia

Meningitis

Sickle cell anemia

Trauma

Protein C/S deficiency

PKD

Angiitis (SLE etc)

Radiation

Marfan's syndrome

Down syndrome

Neurofibromatosis

Tuberous sclerosis

etc